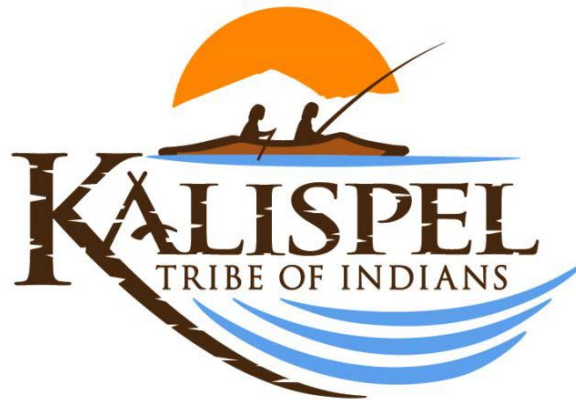


APPENDIX B
PUBLIC INVOLVEMENT



Prepared by:



2018



OPEN TO THE PUBLIC

PRESENTATION AGENDA

Roadway Inventory, LRTP, TTIP Presentation
February 6, 2018



Introductions

- Tribal Project Team
 - Julia Whitford
 - Tell Hamilton
 - Niki Whitford
- Red Plains Professional – Chris Robideau
 - RPP staff who worked on the project
 - Jason Celeste
 - Vivian Spidle
 - Ken Picard
 - Mark Drosnes
 - Stacey Robideau
 - Dale Lewis
 - John Younger, PE
 - Tim Scott, EIT

Tribal Transportation Program Overview and Discussion

- Project Overview and Purpose

Inventory Deliverables Presentation

- Presentation of GIS Deliverable (Google Earth Presentation)
 - *Tells the story of the project*
- Presentation of Printed Deliverables (Binder)
 - Recommended Inventory Table
 - 5704 Inventory Forms
 - Strip Maps
 - Inventory Map A – Existing Inventory
 - Inventory Map B – Recommended Inventory
 - Memorandum of Understandings

Tribal Resolution Presentation and Approval

Next Steps of the Transportation Planning Project

- Long Range Transportation Plan
(presentation planned for March 06, 2018)



Tribal Transportation Program (TTP) Inventory Presentation

February 6, 2018

Presentation Outline:

- Introduction
- The Tribal Transportation Program (TTP)
Overview and Project Purpose
- Inventory Deliverables (NTTFI)
- Presentation of Draft Tribal Resolution
- Next Steps for Project



Please ask questions during the presentation...
the more interaction the better!



INTRODUCTIONS

February 6, 2018

Introductions

I am honored to be here today to present to you! Thank you for this time!

- **Red Plains Professional Inc. is a 100% Indian Owned Company** specializing in:
 - Tribal Transportation Program Management
 - Planning—Transportation, Land Use, Safety, Maintenance, Master, Strategic, Site...
 - NTTFI Asset Management and Inventory
 - GIS
 - Civil Engineering
 - Traffic Analysis and Modeling
 - Site Development
 - Safety Plans and Roadway Safety Audits
 - Transit Planning
- We are a certified small business, disadvantaged business enterprise, with offices in Washington, Oregon, Utah and Oklahoma.
- We are currently working with the Kalispel Tribe to provide technical assistance planning and engineering in support of the implementation of the Tribal Transportation Program.



Christopher L. Robideau
Senior Vice President

1499 SE Tech Center Place
Suite 290
Vancouver, WA 98683
Fax: 360.258.0274

chris.robideau@red-plains.com
www.red-plains.com
Office: 360.448.7999
Cell: 360.567.7130





Review Slides: THE TTP PROGRAM

February 6, 2018

What is the Tribal Transportation Program

- Federal funding for Tribal Transportation Programs
- The unique 567 Tribal Nations in the United States have specific transportation needs that must be funded and supported in order to maintain the public transportation network
- The program is supported by the National Highway Trust Fund which is dependent on the Gas Tax (for now)
- Tribal Governments and Tribal Transportation Departments implement the program with assistance from the Federal Highway Administration and the Bureau of Indian Affairs
- The program is funded through the US National Highway Bills
 - ISDEA, SAFETY-LU, MAP-21, and now the FAST Act through 2020
 - TTP Program - 25 CFR Part 170 (New version approved Dec. 2016)
 - ROW – 25CFR Part 169 (revised in late 2015)



How does the Tribal Share Get Determined

Review Slide

50% Cost to Construct (CTC)

the costs associated with bringing every accepted IRR section of roadway up to standard

30% Vehicle Miles Traveled (VMT)

the number of accepted IRR miles multiplied by the number of vehicles on those miles

20% Population

the number of Native Americans served by the IRR system according to NAHASDA

27% Eligible Inventory Mileage

BIA and Tribally Owned Roads pre 2012 and pre 2004 county and state miles – simple miles

34% Equal Regional Split then 2005-2011 Avg.

Average 2005-2011 tribal share % in relation to other tribes in your BIA Region

39% Population (% of National Total)

Tribe's NAHASDA population number as a percentage of NAHASDA Total Population

Regulation Transition

2012 – 100/0%

2013 – 80/20%

2014 – 60/40%

2015 – 40/60%

2016 – 20/80%

FAST Act
uses these
%'s
through
2020

Program Overview (New Highway Bill)

FAST Act (12/4/15) Fixing America's Surface Transportation Act

- **Increased funding**
 - \$465m in FY16 to \$505 m in FY20 (\$10 Million Increase per year)
- **Data collection requirement**
 - Similar to ARRA (funds received and expended; status of activities and projects; number of jobs created and retained.)
- **The establishment of a TTP/DOT Office of Self-Governance**
 - One stop shop at DOT for all funds from DOT agencies to tribes through one agreement.
- **PM&O funding reduced from 6% to 5%.**
 - \$3.75 million reduction to FHWA and BIA for program management and oversight.



Program Overview



Review Slide

The FAST Act:

- Five-year, fully paid-for transportation bill to provide needed certainty for states and local governments to plan and undertake long-term, complex projects
- Reforms and strengthens surface transportation infrastructure and safety programs
- Refocuses programs on national priorities, including nationally and regionally significant projects and the movement of freight
- Increases flexibility for states and local governments to better address their unique infrastructure priorities
- Streamlines environmental review and project approval processes
- Improves passenger rail infrastructure and safety programs, reduces costs, leverages private sector resources, creates greater accountability and transparency for Amtrak, and accelerates rail project delivery
- Promotes innovation
- Maintains a strong commitment of highway, rail, and hazmat safety

<http://transportation.house.gov/fast-act/>

TTP Program Purpose

Review Slide

- Provide safe and adequate transportation and public road access to and within reservations, Indian lands and communities.....
- Contribute to economic development, self-determination and employment of Indians and Alaska Natives.....

TTP Program Guiding Principles

- ▶ Promote the rights of tribal governments to govern their own affairs.....
- ▶ Encourage flexibility and innovation in program implementation.....
- ▶ Regulations will be liberally construed for the benefit of Tribes.....
- ▶ Ensure implementation is consistent with tribal sovereignty and the government-to-government relationship.....



* As we will discuss later in the presentation the “purpose” and the “guiding principles” sometimes conflict with how the program is implemented based on interpretation of the governing regulations. Reason: No one regulation can adequately govern the unique characteristics and needs of 567 Tribal Nations.

Program Overview

- Current Program Funding Level - \$465,000,000
- Program Set Asides
 - PM&O (BIA and FHWA operating funding) 5% - \$23 million
 - Planning (Dispersed to each Tribe in Tribal Share) 2% - \$9.3 million
 - Bridge Program (Application Process) 3% - \$9.3 million
 - Safety Program (Application Process) 2% - \$9.3 million
 - Remaining Funding goes into Tribal Shares – \$415 million
- What determines Tribal Share Levels
 - 39% Population (NAHASDA)
 - 27% Current Inventory
 - 34% Historic Transportation Network Inventory (region breakout)

TTP – Allowable Expenditures & Activities

- **ALLOWABLE USES OF TTP FUNDS (Appendix A to Subpart B of the 25 CFR)**
- Project must be listed in LRTP (20-year planning document)
- Road or Facility must be on the “Official” TTP Facility Inventory (Roadway Assessment)
- Project Must be listed on the TTIP

[illegible]



INVENTORY

February 6, 2018

NTTFI Regulations

- A conditions assessment and inventory of all transportation facilities within or providing primary access to the Reservation including proposed non-existing roads programed for development
- Roads must be:
 - Open to the public (tribe can still maintain jurisdiction and close roads as needed)
 - Be multi-purpose roads
 - Residential roads must serve 3 or more homes (no personal driveways)
 - Proposed Roads must be feasible to construct (new regs on 12/2016 for these additions)
- In order to spend TTP funding to improve or maintain the facility, it must be on the “Official” Inventory
- Historically this inventory drove TTP funding Tribal Share Levels

.....(frozen in 2012 as it pertains to adjusting the Tribe TTP Funding Level)

.....(BIA and FHWA are still urging tribes to keep their inventory up to date incase formulas change)

.....(FAST ACT maintain the freeze to the funding formula through 2020)

OPEN TO THE PUBLIC REGULATIONS

- The NTTFI is an engineering, planning, and federal funding distribution resource for the Tribal Transportation Program
- It enables tribes to spend their TTP Federal Funding on facilities identified in the Inventory
- It defines roadway maintenance responsibility
- The NTTFI does **NOT**:
 - Define Roadway Ownership (Land Ownership Title and ROW's do)
 - Define Official Right of Way (Official ROW documents are managed by the roadway Owner. Example: BIA Roads ROW are maintained at the BIA Agency Offices)
 - Define Roadway Jurisdictions (Historic Boundaries and Laws, Jurisdiction Boundaries, Deputation Agreements, Law Enforcement MOA's , and legal proceedings do)
- We do code the fields of ownership and ROW status but the NTTFI Database is for TTP program use only
- If roads are in the inventory, the Tribe is saying that they do intend for these roads to be open to the public. They are not saying that ownership, jurisdiction, or tribal rights or sovereignty is being waived.
- Tribal Cultural access roads can be entered into the Inventory as Tribally owed roads and trails.
 - They are coded in the inventory as Tribally owned roads (ownership code "2")
 - Tribes then have the right to close those roads as needed for certain reasons specified in the Fed Reg.

These are federal funds paid by tax payers so the open to the public requirement is intended, however that intention/regulation does not override Tribal Sovereignty. these two conflict the road should likely be removed from the inventory if public access is not intended.

TRIBE'S NTTFI TABLE (existing)



Indian Reservation Roads Program
Ownership by Route (Road Owner)
FY 2017 Inventory

Region - P - Northwest
Agency - 12 - Spokane

Inventory Location - 103 - Kalispel

Route No.	Class	Bridge	
		ID Number	Length (ft)
0001	5		
0001	5		
0002	5		
0002	5		
0003	5		
0003	5		
0003	5		
0004	5		
0004	5		
0005	5		
0005	5		
0005	5		
0006	5		
0007	5		
0007	5		
0007	5		
0008	9		
0009	5		
0009	5		
0009	5		
0010	5		
0011	5		
0012	5		
0013	5		
0014	2		
0014	5		
0014	5		
0014	5		
0015	8		
0016	5		
0017	5		
0018	5		
0019	5		
0020	5		
0021	5		
0021	5		
0021	5		

Aug. 30, 2017



Indian Reservation Roads Program
Ownership by Route (Road Owner)
FY 2017 Inventory

Region - P - Northwest
Agency - 12 - Spokane
Inventory Location - 103 - Kalispel

Route No.	Class	Bridge		Ownership	Owner No.
		ID Number	Length (ft)		
0021	6			2 - TRIBE	
0022	6			2 - TRIBE	
0023	6			2 - TRIBE	
0024	5			2 - TRIBE	
0024	9			2 - TRIBE	
0025	6			2 - TRIBE	
0026	6			2 - TRIBE	
0027	6			2 - TRIBE	
0028	6			2 - TRIBE	
0029	6			2 - TRIBE	
0030	6			2 - TRIBE	
0031	6			2 - TRIBE	
0033	5			2 - TRIBE	
0034	5			2 - TRIBE	
0034	5			2 - TRIBE	
0101	5			1 - BIA	
0101	5			1 - BIA	
1020	2			3 - STATE	OSPCD
1020	2			3 - STATE	OSPCD
1020	2			3 - STATE	OSPCD
1211	2			3 - STATE	SR011
1211	2			3 - STATE	SR011
1300	3			4 - URBAN	
1300	3			4 - URBAN	
1300	3			4 - URBAN	
1400	4			5 - COUNTY AND TOWNSHIP	
1400	4			5 - STATE	
2000	1			3 - STATE	
2000	1			3 - STATE	
2000	1			3 - STATE	
2000	1			3 - STATE	
2000	1			3 - STATE	
2000	1			3 - STATE	
2100	4			5 - COUNTY AND TOWNSHIP	
2100	7			4 - URBAN	
2100	7			4 - URBAN	
2100	7			4 - URBAN	
3389	2			5 - COUNTY AND TOWNSHIP	
3389	2			5 - COUNTY AND TOWNSHIP	

Aug. 30, 2017

Page 1 of 4



Indian Reservation Roads Program
Ownership by Route (Road Owner)
FY 2017 Inventory

Region - P - Northwest
Agency - 12 - Spokane
Inventory Location - 103 - Kalispel

Route No.	Class	Bridge		Ownership	Owner No.	Section Number	Section Length (mi)	Route Total (mi)
		ID Number	Length (ft)					
3389	2			5 - COUNTY AND TOWNSHIP		30		
3389	2			5 - COUNTY AND TOWNSHIP		30	0.5	
3389	2			5 - COUNTY AND TOWNSHIP		40	3.5	
3421	5			7 - OTHER FEDERAL		30	3.7	5.2
3421	5			7 - OTHER FEDERAL		810	1.1	
3421	5			7 - OTHER FEDERAL		620	0.4	
4013	6			1 - BIA		10	1.9	1.9
4041	5			1 - BIA		10	0.1	0.5
4041	5			1 - BIA		20	0.4	
4071	5			1 - BIA		10	0.3	0.3
4072	5			7 - OTHER FEDERAL		10	1.9	1.3
4072	5			2 - TRIBE		20	0.3	
4100	5			1 - BIA		10	0.9	0.9
4110	5			1 - BIA		10	0.5	1.2
4110	5			1 - BIA		20	0.7	
4120	5			1 - BIA		10	0.9	0.9
4130	5			1 - BIA		10	0.3	0.6
4130	5			1 - BIA		20	0.3	
4140	5			1 - BIA		10	0.4	0.4
4150	5			1 - BIA		10	0.2	0.2
4160	5			1 - BIA		10	0.4	0.4
4170	5			1 - BIA		10	0.1	0.5
4170	5			1 - BIA		20	0.4	
4180	5			1 - BIA		10	0.9	0.9
4190	5			1 - BIA		10	0.4	0.7
4190	5			1 - BIA		20	0.3	
4302	2			3 - STATE		10	0.7	0.7
4310	4			4 - URBAN		20	0.8	1.0
4320	4			5 - COUNTY AND TOWNSHIP		810	0.2	
4330	4			5 - COUNTY AND TOWNSHIP		20	0.3	1.8
4330	4			5 - COUNTY AND TOWNSHIP		30	0.5	
4330	4			5 - COUNTY AND TOWNSHIP		810	1.0	
4330	2			4 - URBAN		10	0.5	0.3
4340	2			4 - URBAN		10	0.6	0.6
9305	4			2 - TRIBE		30	3.2	12.4
9305	4			2 - TRIBE		40	5.3	
9305	4			5 - COUNTY AND TOWNSHIP		42	0.6	

Aug. 30, 2017

Page 2 of 4

Page 2 of 4



Indian Reservation Roads Program
Ownership by Route (Road Owner)
FY 2017 Inventory

Region - P - Northwest

Agency - 12 - Spokane

Inventory Location - 103 - Kalispel

Route No.	Class	Bridge		Ownership	Owner No.	Section Number	Section Length (mi)	Route Total (mi)
		ID Number	Length (ft)					
9305	4			2 - TRIBE		44		0.3
9305	4			5 - COUNTY AND TOWNSHIP		46		0.1
9305	4			2 - TRIBE		48		3.1
9305	4			5 - COUNTY AND TOWNSHIP		50		7.6
9305	4			5 - COUNTY AND TOWNSHIP		60		0.1
9305	4			5 - COUNTY AND TOWNSHIP		70		16.6
9305	4	80387		800 5 - COUNTY AND TOWNSHIP		80		
9305	4			5 - COUNTY AND TOWNSHIP		90		0.2
9305	4			5 - COUNTY AND TOWNSHIP		810		14.3
9305	4			2 - TRIBE		820		1.0

Region Subtotals Number routes: 60 Number sections: 123 Total length: 236.9

Aug. 30, 2017

Page 4 of 4

TRIBE'S NTTFI TABLE (existing)



Indian Reservation Roads Program

Miles of Road by Organizational Responsibility and Surface Type

Present System

FY 2017 Inventory

P - Northwest

P12 - Spokane

P12103 - Kalispel

Ownership	Mileage* (mi) with CN of 0, 1, 2, or 3 Classified by Existing Surface Type Code							
	Proposed** (0)	Earth (1)	Gravel (3)	< 2 inch (4)	> 2 inch (5)	Concrete (6)	Trail (9)	None (null)
3 - State	0.0	0.0	0.0	15.7	103.0	3.9	0.0	0.0
8 - Other	0.0	0.0	0.0	0.0	0.0	0.0	0.0	0.0
7 - Other Federal	0.0	0.0	6.2	0.0	0.0	0.0	0.0	0.0
1 - BIA	0.0	0.0	19.7	4.8	0.2	0.0	0.0	0.0
4 - Urban	0.0	0.0	0.0	0.0	11.4	0.0	0.0	0.0
6 - Other BIA Offices	0.0	0.0	0.0	0.0	0.0	0.0	0.0	0.0
2 - Tribe	0.0	0.0	0.3	4.7	9.9	0.3	0.0	0.0
5 - County And Township	0.0	0.0	0.0	4.5	44.3	0.0	0.0	0.0
Total:	0.0	0.0	26.2	29.7	168.8	4.2	0.0	0.0

Mileage* (mi) with CN = 4 Classified by Future Surface Type Code				Total (mi) CN 0 1 2 3 4
Earth (E)	Gravel (G)	Paved (P)	None (null)	
0.0	0.0	0.0	0.0	122.6
0.0	0.0	0.0	0.0	0.0
0.0	0.0	0.0	0.0	6.2
0.0	0.0	0.0	1.9	26.6
0.0	0.0	0.0	0.0	11.4
0.0	0.0	0.0	0.0	0.0
0.0	6.1	0.0	0.0	21.3
0.0	0.0	0.0	0.0	48.8
0.0	6.1	0.0	1.9	236.9

*All mileage in OFFICIAL records except for class 11 (overlap).

**This column contains mileage where the surface type is 0 (proposed) but the construction need is not 4.

TRIBE'S NTTFI TABLE (existing)



Indian Reservation Roads Program Miles of Road by Class and Organizational Responsibility Existing System FY 2017 Inventory

P - Northwest
P12 - Spokane
P12103 - Kalispel

Ownership	Mileage (mi) Classified According to Class Code with class 8, 9, 10, 11 (overlap) excluded*								Total Mileage (mi)		
	Major Arterial (1)	Rural Minor Arterial (2)	City Local (3)	Rural Major Collector (4)	Rural Local (5)	City Minor Arterial (6)	City Collector (7)	None (null)	Classes 1 2 3 4 5 6 7	Classes none	Classes 1 2 3 4 5 6 7 none
1 - BIA	0.0	0.0	0.0	0.0	24.4	0.0	0.0	0.0	24.4	0.0	24.4
2 - Tribe	0.0	0.3	0.0	12.9	1.6	0.0	0.0	0.0	14.8	0.0	14.8
3 - State	55.6	63.9	0.0	3.1	0.0	0.0	0.0	0.0	122.6	0.0	122.6
4 - Urban	0.0	1.1	0.6	0.8	0.0	0.0	8.9	0.0	11.4	0.0	11.4
5 - County And Township	0.0	4.5	1.7	42.6	0.0	0.0	0.0	0.0	48.8	0.0	48.8
6 - Other BIA Offices	0.0	0.0	0.0	0.0	0.0	0.0	0.0	0.0	0.0	0.0	0.0
7 - Other Federal	0.0	0.0	0.0	0.0	6.2	0.0	0.0	0.0	6.2	0.0	6.2
8 - Other	0.0	0.0	0.0	0.0	0.0	0.0	0.0	0.0	0.0	0.0	0.0
Total:	55.6	69.8	2.3	59.4	32.2	0.0	8.9	0.0	228.2	0.0	228.2

*Mileage excludes proposed construction (CN=4).

TRIBE'S NTTFI TABLE (existing)



Indian Reservation Roads Program Miles of Road by Class and Organizational Responsibility Present System FY 2017 Inventory

P - Northwest
P12 - Spokane
P12103 - Kalispel

Ownership	Mileage (mi) Classified According to Class Code with class 11 (overlap) excluded*										
	Major Arterial (1)	Rural Minor Arterial (2)	City Local (3)	Rural Major Collector (4)	Rural Local (5)	City Minor Arterial (6)	City Collector (7)	Trail (8)	Other Trans Fac (9)	Airstrip (10)	None (null)
1 - BIA	0.0	0.0	0.0	0.0	24.4	0.0	0.0	2.0	0.2	0.0	0.0
2 - Tribe	0.0	0.3	0.0	12.9	3.8	3.9	0.0	0.3	0.1	0.0	0.0
3 - State	55.6	63.9	0.0	3.1	0.0	0.0	0.0	0.0	0.0	0.0	0.0
4 - Urban	0.0	1.1	0.6	0.8	0.0	0.0	8.9	0.0	0.0	0.0	0.0
5 - County And Township	0.0	4.5	1.7	42.6	0.0	0.0	0.0	0.0	0.0	0.0	0.0
6 - Other BIA Offices	0.0	0.0	0.0	0.0	0.0	0.0	0.0	0.0	0.0	0.0	0.0
7 - Other Federal	0.0	0.0	0.0	0.0	6.2	0.0	0.0	0.0	0.0	0.0	0.0
8 - Other	0.0	0.0	0.0	0.0	0.0	0.0	0.0	0.0	0.0	0.0	0.0
Total:	55.6	69.8	2.3	59.4	34.4	3.9	8.9	2.3	0.3	0.0	0.0

Total Mileage (mi)														
Classes				Classes			Classes							
1 2 3 4				9 10			1 2 3 4 5							
5 6 7 8				none			6 7 5 9 10							
							none							
26.4				0.2			26.6							
21.2				0.1			21.3							
122.6				0.0			122.6							
11.4				0.0			11.4							
48.8				0.0			48.8							
0.0				0.0			0.0							
6.2				0.0			6.2							
0.0				0.0			0.0							
236.6				0.3			236.9							

*Mileage includes proposed construction (CN=4).



Indian Reservation Roads Program
Construction Cost to Build Final System
Reporting Final System Miles and Future Surface Types
FY 2018 Inventory

Region P - NORTHWEST
Agency 12 - SPOKANE
Reservation 103 - KALISPEL

	Class 1	Class 2	Class 3	Class 4	Class 5	Class 6	Class 7	Other	Total
<u>Road Length (mi)</u>									
Earth	0.0	0.0	2.3	0.0	0.0	0.0	0.0	0.0	2.3
Gravel	0.0	0.0	0.0	55.2	33.4	3.9	0.0	0.0	92.5
Pavement	55.6	69.8	0.0	4.2	1.0	0.0	8.9	0.0	139.5
not specified	0.0	0.0	0.0	0.0	0.0	0.0	0.0	2.6	2.6
Total	55.6	69.8	2.3	59.4	34.4	5,875.8	768.5	2.6	236.9

<u>Bridge Length (ft)</u>									
Total	0	2,600	0	800	0	0	0	0	3,400

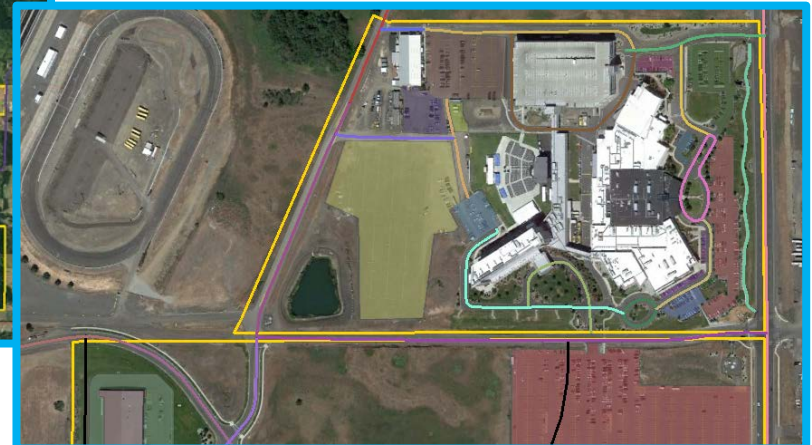
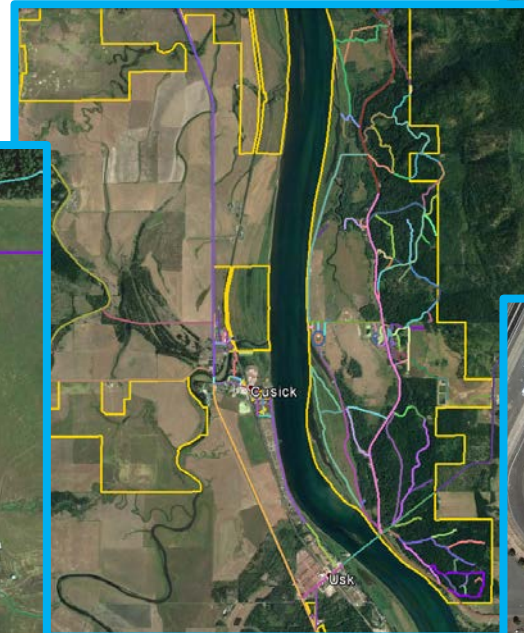
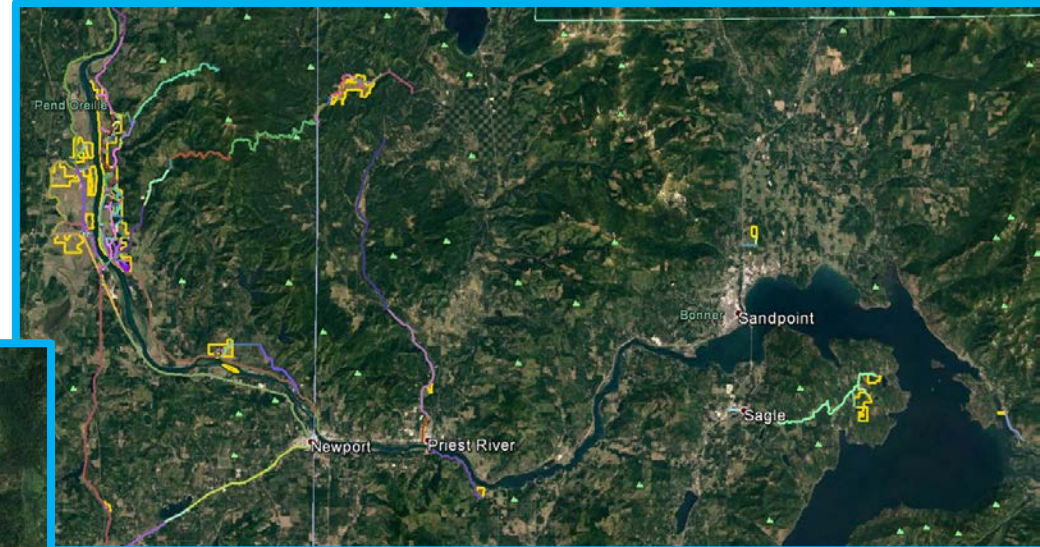
<u>CTC (\$1000)</u>									
Incidental	2,368	1,642	1,378	23,244	10,897	2,532	241	413	42,715
Addnl Incidental	0	0	0	0	0	0	0	0	0
Grade & Drain	0	10	929	20,218	15,015	2,248	527	0	38,946
Aggregate	0	3,204	0	0	4,737	1,095	0	0	9,036
Pavement	0	12,727	0	0	360	0	0	0	13,087
Bridges	0	0	0	0	0	0	0	0	0
Total	2,368	17,583	2,306	43,461	31,009	5,876	768	413	103,784

In the simplest of statements, Cost to Construct in the amount of money it would take to bring all the roads on the NTTFI up to acceptable standard!!!

The Tribe's CTC is
\$103,784,000 for
236.9 miles and Class 4 & 5 rural roads would be the most expensive to fix

Recommended 2017 Inventory Update

- Existing Inventory = 236.9 inaccurate miles w/ 0 parking lots 60 Routed 123 Sections
- 2018 Inventory Update
 - 296.1 Miles (+59.2)
 - 77 parking facilities
 - 157 Routes
 - 429 Sections



NTTFI – GOOGLE EARTH Presentation

Google Earth Pro

File Edit View Tools Add Help

▼ Search

Search

ex: Computer repair near Boston

Get Directions History

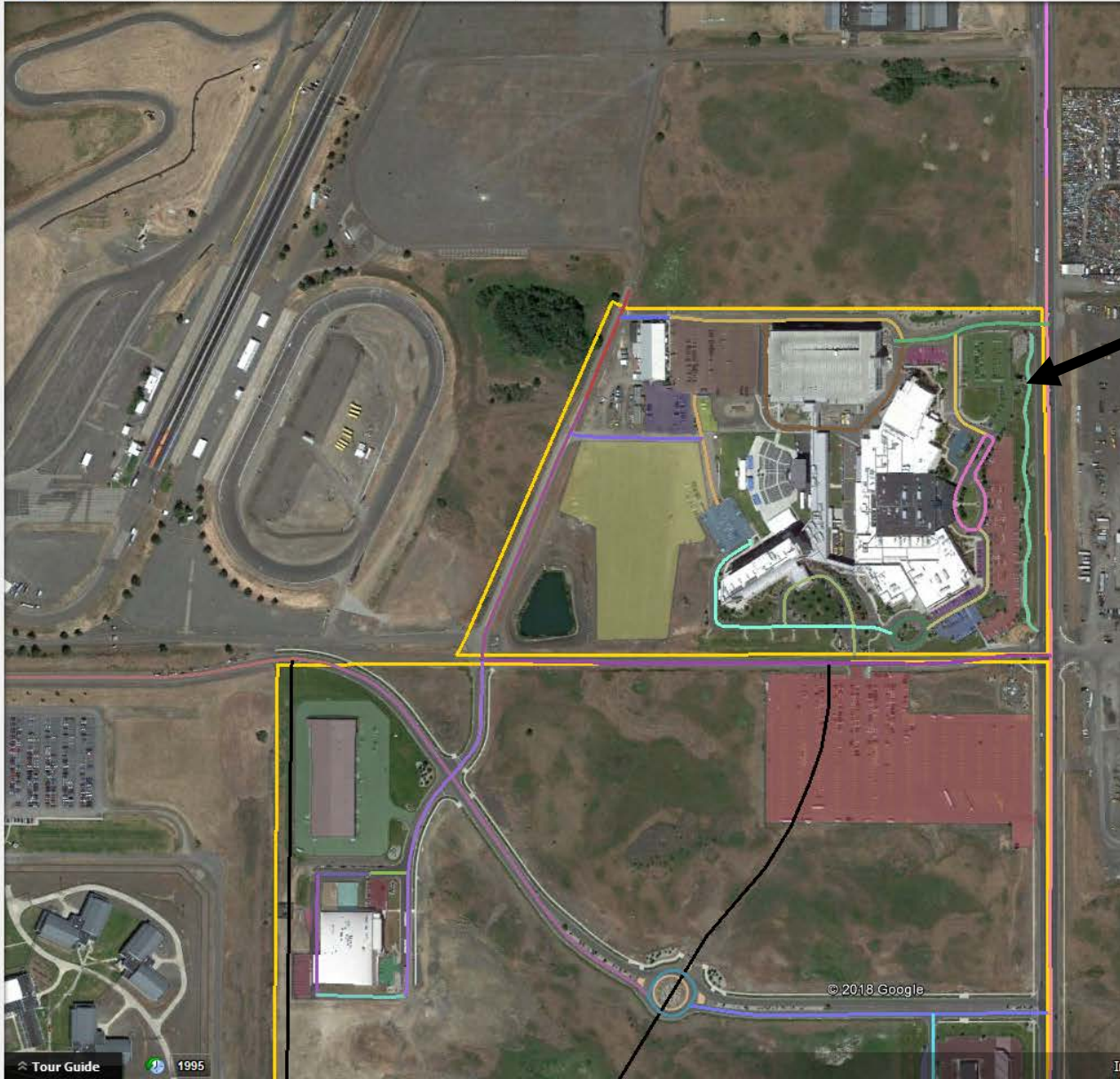
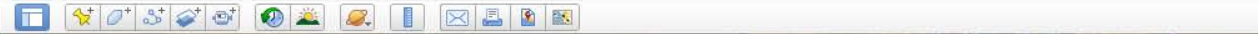
▼ Places

- ✓ Kalispel NTTFI 2018
 - ✓ Kalispel NTTFI Parking Lots 2018
 - ✓ Kalispel NTTFI Routes 2018
 - ✓ 0001_010
 - ✓ 0001_020
 - ✓ 0001_030
 - ✓ 0002_010
 - ✓ 0002_020
 - ✓ 0002_030
 - ✓ 0003_010
 - ✓ 0003_020
 - ✓ 0003_030
 - ✓ 0003_040
 - ✓ 0004_010
 - ✓ 0004_020
 - ✓ 0004_030
 - ✓ 0004_040
 - ✓ 0004_050
 - ✓ 0005_010
 - ✓ 0005_020
 - ✓ 0005_030
 - ✓ 0005_040
 - ✓ 0005_050
 - ✓ 0005_060
 - ✓ 0006_010
 - ✓ 0006_020
 - ✓ 0007_010
 - ✓ 0007_020
 - ✓ 0008_010
 - ✓ 0009_010
 - ✓ 0009_020
 - ✓ 0010_010
 - ✓ 0010_020
 - ✓ 0011_010
 - ✓ 0012_010
 - ✓ 0012_020
 - ✓ 0013_010
 - ✓ 0015_010
 - ✓ 0016_010
 - ✓ 0016_020
 - ✓ 0017_010

▼ Layers

- ✓ Primary Database
- ✓ The new Google Earth
- ✓ Borders and Labels
- ✓ Places

Snipping Tool



0047_010



0047_010

Route Name	Northern Quest Walking Path
Route Number	0047
Section Number	010
Length	0.2
Ownership	2-Tribe
Class	8-Trail
Surface Type	6-Concrete
City	Airway Heights
Bridge Number	
Bridge Condition	
Bridge Length	0
County	063-Spokane
Congress District	05
State	53-Washington
Construction Need	2-Construction Need-Other
Terrain	2-Rolling
Roadbed Condition	5-Good/No Curbs
SCI	85
Surface Width	5

Google Earth

Imagery Date: 6/20/2017 47°39'31.09" N 117°33'48.00" W elev 0 ft eye alt 5149 ft

NTTFI – GOOGLE EARTH Presentation

Google Earth Pro

File Edit View Tools Add Help

▼ Search

Search

ex: Computer repair near Boston

Get Directions History

▼ Places

0001 010

0001 020

0001 030

0002 010

0002 020

0002 030

0003 010

0003 020

0003 030

0003 040

0004 010

0004 020

0004 030

0004 040

0004 050

0005 010

0005 020

0005 030

0005 040

0005 050

0005 060

0006 010

0006 020

0007 010

0007 020

0008 010

0009 010

0009 020

0010 010

0010 020

0011 010

0012 010

0012 020

0013 010

0015 010

0016 010

0016 020

0017 010

0019 010

▼ Layers

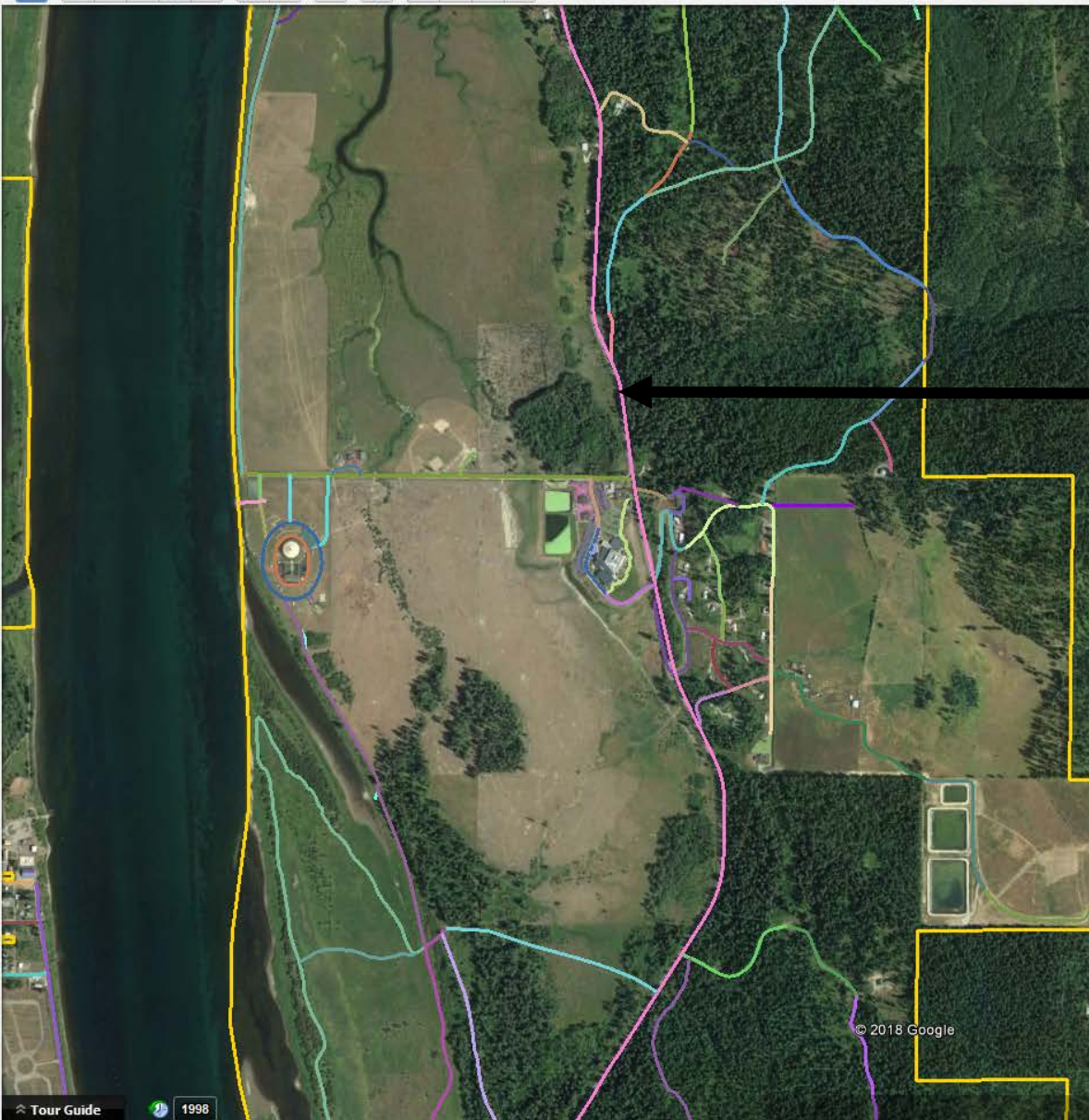
Primary Database

The new Google Earth

Borders and Labels

Places


9305_040



© 2018 Google

Tour Guide 1998

9305_040



9305_040

Route Name	LeClerc Rd
Route Number	9305
Section Number	040
Length	3.2
Ownership	2-Tribe
Class	5-Rural Local
Surface Type	5-Bituminous>2"
City	
Bridge Number	
Bridge Condition	
Bridge Length	0
County	051-Pend Oreille
Congress District	05
State	53-Washington
Construction Need	2-Construction Need-Other
Terrain	2-Rolling
Roadbed Condition	5-Good/No Curbs
SCI	81
Surface Width	??

Google Earth

48°20'32.22" N 117°17'11.02" W elev 0 ft eye alt 13922 ft

NTTFI – GOOGLE EARTH Presentation

Google Earth Pro

File Edit View Tools Add Help

▼ Search

Search

ex: Computer repair near Boston

Get Directions History

▼ Places

☒ Kalispel NTTFI Parking Lots 2018

☒ Kalispel NTTFI Routes 2018

☒ 0001 010

☒ 0001 020

☒ 0001 030

☒ 0002 010

☒ 0002 020

☒ 0002 030

☒ 0003 010

☒ 0003 020

☒ 0003 030

☒ 0003 040

☒ 0004 010

☒ 0004 020

☒ 0004 030

☒ 0004 040

☒ 0004 050

☒ 0005 010

☒ 0005 020

☒ 0005 030

☒ 0005 040

☒ 0005 050

☒ 0005 060

☒ 0006 010

☒ 0006 020

☒ 0007 010

☒ 0007 020

☒ 0008 010

☒ 0009 010

☒ 0009 020

☒ 0010 010

☒ 0010 020

☒ 0011 010

☒ 0012 010

☒ 0012 020

☒ 0013 010

☒ 0015 010

☒ 0016 010

☒ 0016 020

☒ 0017 010

☒ 0019 010

▼ Layers


☒ Primary Database

☒ The new Google Earth

☒ Borders and Labels

☐ Places

4110_030



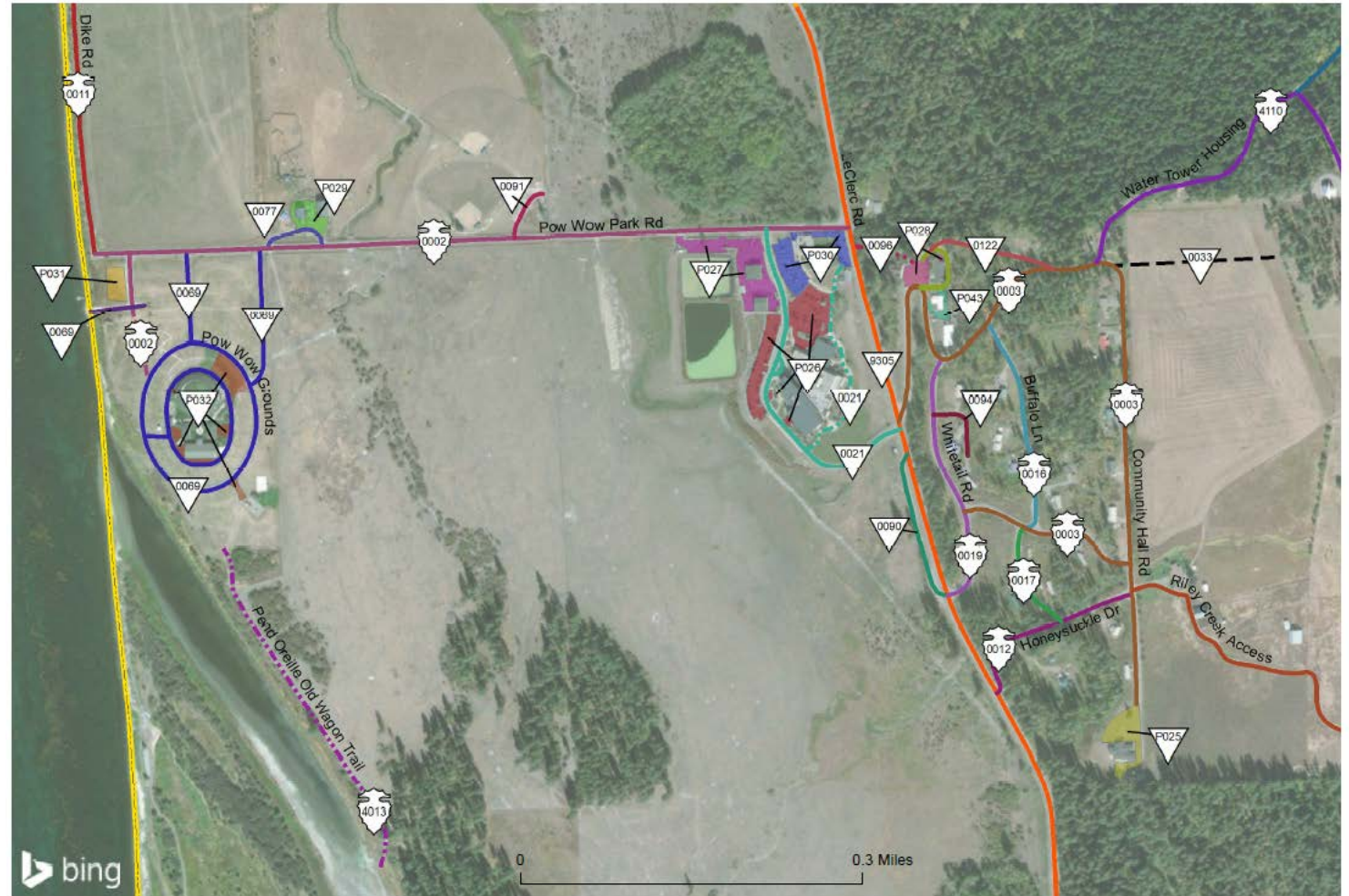
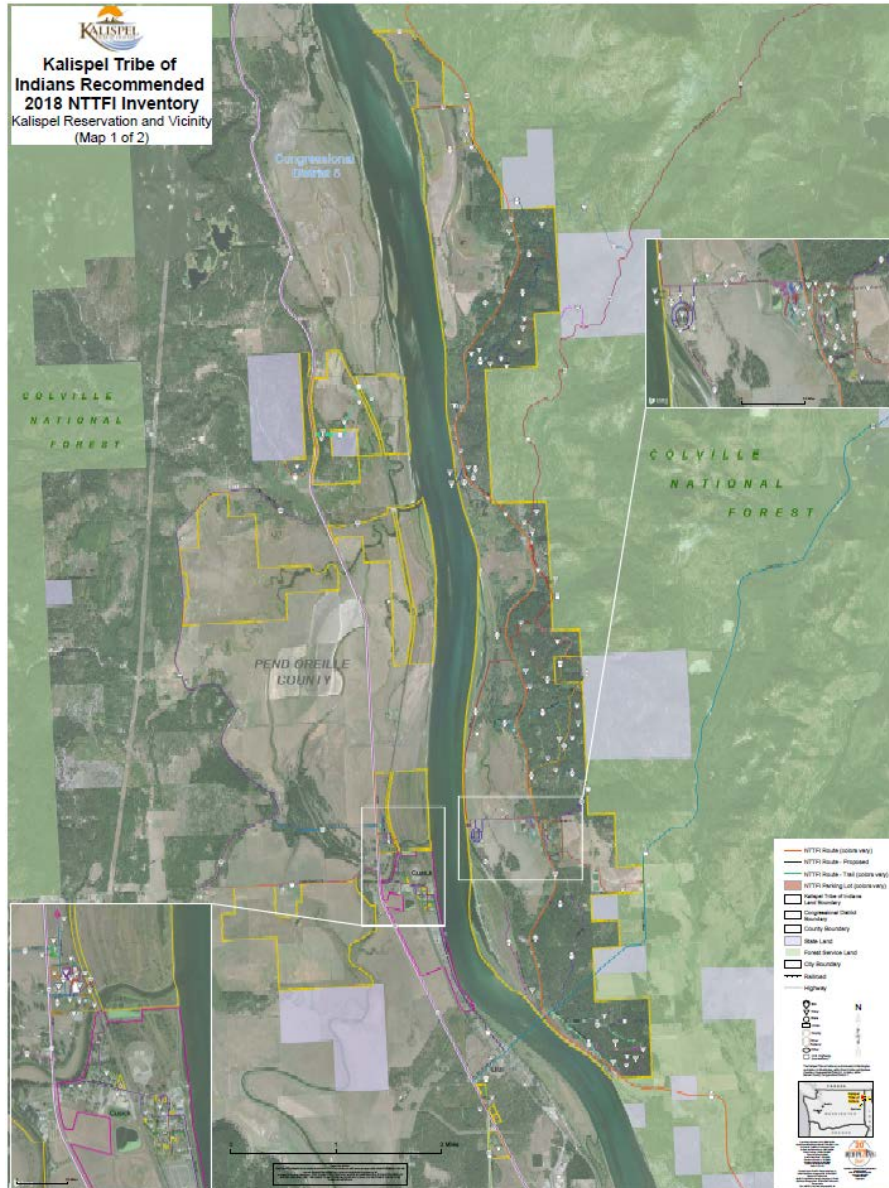
Route Name	Water Tower Lp
Route Number	4110
Section Number	030
Length	0.1
Ownership	5-County/Township
Class	5-Rural Local
Surface Type	1-Earth
City	
Bridge Number	
Bridge Condition	
Bridge Length	0
County	051-Pend Oreille
Congress District	05
State	53-Washington
Construction Need	2-Construction Need-Other
Terrain	2-Rolling
Roadbed Condition	2-Graded Road
SCI	0
Surface Width	8
Federal Aid Category	1-Local Roads
ROW Status	2-ROW Acquired/Not Recorded
ROW Width	0
Shoulder Width	0
Shoulder Type	0-No Shoulder
Drainage Condition	0-Unimproved Road
Shoulder Condition	0-No Shoulder
Number of RR Xings	0
RR Xing Type	
Level of Maintenance	1-Little(0-9%)
Comment	
Begin Lat	48.348711
Begin Long	-117.260925
End Lat	48.350503
End Long	-117.26089

Google Earth

48°20'32.22" N 117°17'11.02" W elev 0 ft eye alt 13922 ft

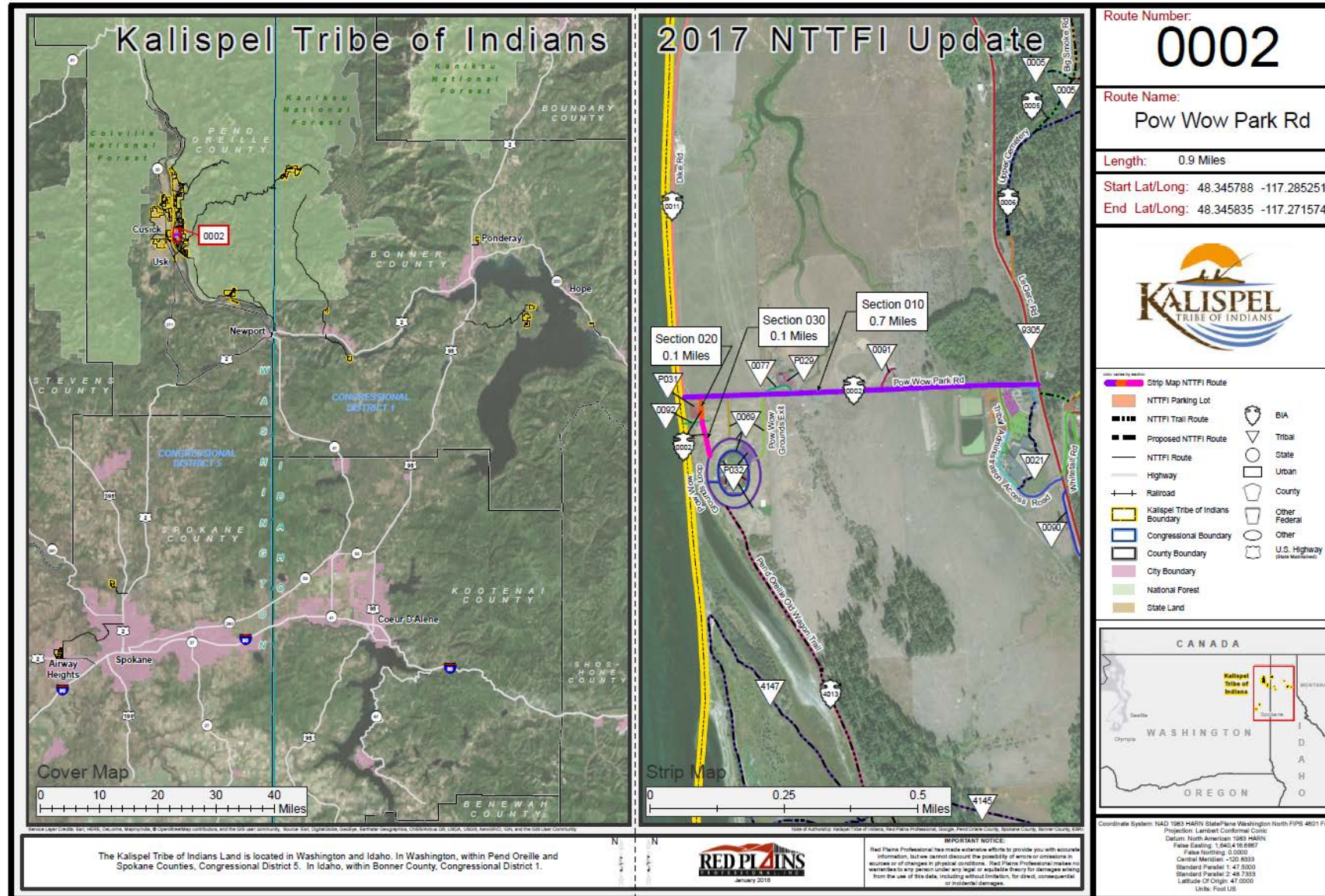
Deliverables Generated for the 2018 Inventory Update

Map B Recommended Inventory



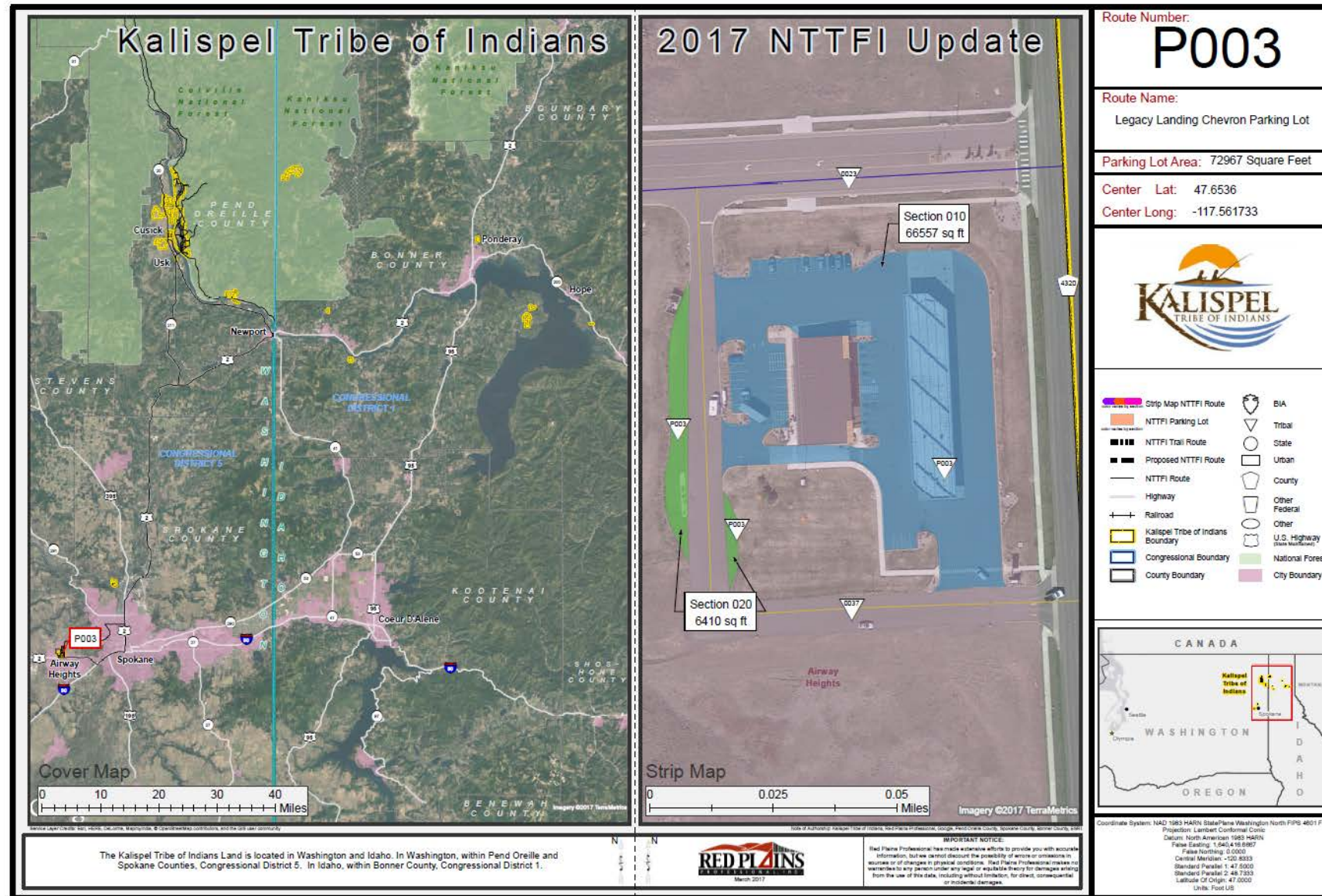
Deliverables Generated for the 2017 Inventory Update

- **Strip Maps** per Route - 157 Individual Route Maps



Deliverables Generated for the 2017 Inventory Update

- **Strip Maps** per Route - 157 Individual Route Maps



Deliverables Generated for the 2017 Inventory Update

- Other deliverables required to complete the NTTFI Update include:

- ▶ The Tribal Resolution:

- ▶ Approved the Inventory Update
- ▶ Approves the LRTP Addendum Table
- ▶ And Acknowledges:
 - ▶ Public Involvement
 - ▶ Open to the Public (Inventory)
 - ▶ Declares NTTFI Tribal Road ROW's
 - ▶ Maintains Tribal Sovereignty
 - ▶ Jurisdiction w/ ability to close per 25 CFR Part 170 Regs

Project Deadlines

- **March 15th** – Initial Inventory Submittal is due in RIFDS to BIA-NWRO
- **May 15th** – Region provides Error and Omissions back to Tribe & RPP
- **June 15th** - Tribe and RPP's deadline to correct and re-submit
- **July 15th** – BIA-SWRO approves inventory up to BIA-DOT (Albuquerque)
- **September 30th** – BIA-DOT approves or rejects inventory





*Thank you
for your time and should you have any questions,
please feel free to contact me!*



Christopher L. Robideau
Senior Vice President

1499 SE Tech Center Place
Suite 290
Vancouver, WA 98683
Fax: 360.258.0274

chris.robideau@red-plains.com
www.red-plains.com
Office: 360.448.7999
Cell: 360.567.7130



Tribal Transportation Program (TTP) Inventory Presentation

February 6, 2018

